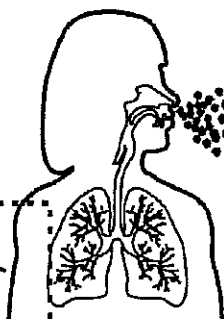
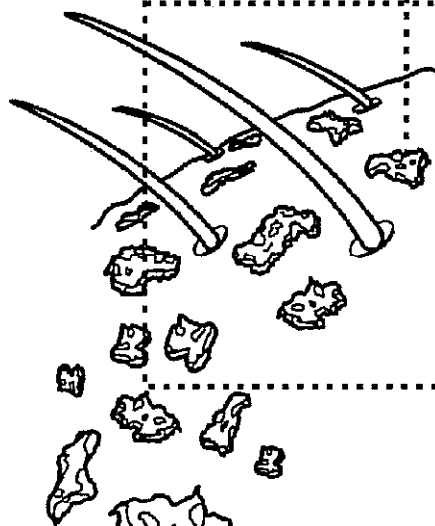


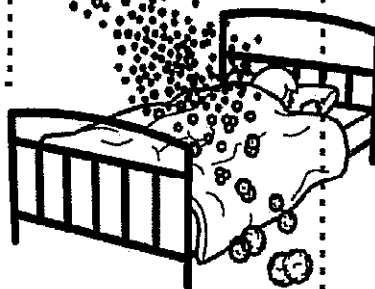
# THE DUST MITE LIFE CYCLE

START

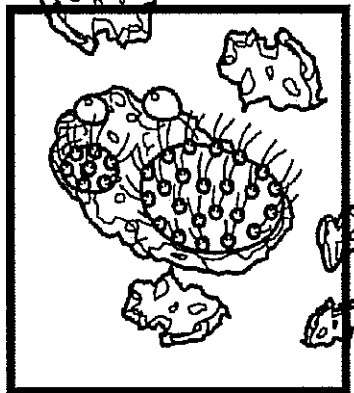
WHILE ASLEEP YOUR  
BODY SHEDS IT'S  
DEAD SKIN



THE DROPPINGS ARE  
INHALED WHICH MAY LEAD  
TO ASTHMA, RHINITIS AND  
SINISITUS.



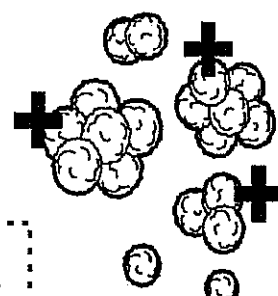
THE STATICALLY  
CHARGED  
DUST MITE  
DROPPINGS  
BECOME  
AIRBORNE



MOISTURE FROM  
THE AIR AND FROM YOUR  
BODY ALLOWS FUNGUS  
TO GROW ON THE  
SHEDDED SKIN WHICH  
CREATES AN  
APPETISING MEAL  
FOR DUST MITES.



DUST MITES EAT THE 'SKIN SOUP'  
OF FUNGUS AND DEAD SKIN



DUST MITES  
LEAVE  
MICROSCOPIC  
DROPPINGS  
WHICH DRY OUT